

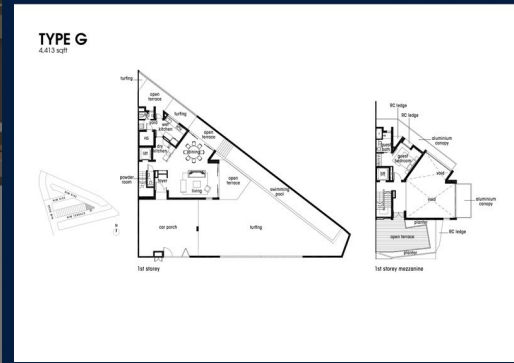
FOR SALE

RESIDENTIAL - CORNER TERRACE HOUSE 4,413SQFT (410SQM) / CALL FOR PRICE!

+65 9733 8283



Corner Terrace



RESIDENTIAL - CORNER TERRACE HOUSE

1, NIM TERRACE, SELETAR, YIO CHU K, SINGAPORE 804360

- LISTING ID: SGLD85177508
- TENURE: LEASEHOLD 99
- TITLE: N/A
- SIZE BUILT-UP: 4,413SQFT (410SQM)
- SIZE LAND: 11.185AC (4.527HA)
- NO. OF FLOORS: 5
- FLOOR/LEVEL: N/A - N/A
- BED ROOMS: 5
- BATH ROOMS: 5
- MAIDS ROOMS: N/A
- PARKING SPACES: N/A
- LAYOUT TYPE: CORNER
- FACING: N/A
- VIEWING: OTHER
- SELLING PRICE: **CALL FOR PRICE!**
- COMPLETION YEAR: 2021
- CONDITION: ORIGINAL CONDITION
- FURNISHING: PARTIALLY FURNISHED
- LISTING DATE: MAY 12, 2021

NIM COLLECTION

Spacious 4,413sqft (410sqm), partially furnished, 5 bedroom, 5 bathroom Corner Terrace House for Sale. Completion in 2021, this corner unit is in original condition. Others: Leasehold 99
This property is currently vacant and ready to move in. Located in Singapore's district D28 near Seletar, Yio Chu K in the area North East (North East region).

INTERIOR FACILITIES

- Balcony
- Private Garden
- Roof Terrace
- Outdoor Patio
- Private Pool
- Terrace

EXTERIOR FACILITIES

- Covered Car Park

VISIT THIS PROPERTY AT: <https://www.thesingaporehome.com/property/SGLD85177508>

CLARA CHAN - HUTTONS ASIA PTE LTD

3 Bishan Place #05-01 CPF Bishan Building
D20, 579838, Singapore

+65 9733 8283
WhatsApp Me

clarachan33@gmail.com

<https://www.thesingaporehome.com>



Scan QR Code

L3008899K
R007328A

Huttons Call for Viewing
The Agency of Choice +65-97338283